



Erasmus+ incoming student guide



Erasmus+

CONTENTS

Foreword	2
Introduction	2
The SARS-CoV-2 pandemic	6
Few words about Romania and Galati	6
Before the Mobility	8
• Application	8
• Romanian language course	9
• Academic calendar & Grading scale	10
• Host country formalities	10
• Transportation	12
During the Mobility	13
• Enrolment Procedure	13
• Attendance	13
• Residence permit & certificate of registration	14
At the End of the Mobility	15
Accommodation	16
• Student dormitory	16
• Private accommodation	17
• Cafeterias/Canteens	17
Sport facilities and leisure activities	18
Practical information	20
Miscellaneous facts	21
• Cost of living	21
• Shopping & Food	22
• Vocabulary and some expressions	24
Contact information	25
Maps	26



FOREWORD

Dear Student,

This guide includes some practical and useful information both about our university and the city of Galati. It has been elaborated by the **Erasmus Office** team of *Dunarea de Jos* University of Galati (**DJUG**) and is meant to make your stay here useful, relevant and enjoyable.

INTRODUCTION

DJUG, the oldest and most important higher education institution in the South East region of Romania, with a tradition recognized in multiple domains and an identity legitimated by the actual configuration of all the study and research domains,

- has established as its mission to continue the Romanian higher education tradition through quality education, an efficient learning process, competitive scientific research, but also through quality services provided to the community and the contribution to ensuring the general, specific and aptitudinal skills of its graduates, in view of developing exceptional professional personalities and an efficient social insertion;
- is a university with its own patrimony and an adequate infrastructure for research;
- is a university whose international cooperation has presupposed student and staff mobilities, but also cooperation in terms of curriculum design and harmonization, scientific titles obtained abroad, etc., and has not restricted its collaboration to participation in international activities but has also functioned as an important international interest center itself.

DJUG is a public institution which supports and promotes the development of specific professional values within the local, regional, national and international community. In the present day context, these values are the following:



- culture actively based on innovative and systematic knowledge;
- culture of scientific and technological competences, organizational and civic competences;
- culture for innovative learning, personal and moral development, pro-active attitude and participation;
- culture for integration in diversity, with respect for identity and reciprocity;
- culture for developing human resources and valorizing all qualifications obtained by graduates of all study cycles in the university.

The vision of the university is based exclusively on generating knowledge through scientific research, on transmitting knowledge through education and professional training, and on valorizing knowledge through technological innovation.

The academic community and the study programmes are the following:

- 12.500 students;
- 1000 teaching staff;
- 14 faculties;
- 71 Bachelor Study Programmes;
- 41 Master study Programmes;
- 4 Doctoral Schools;
- 16 Doctoral Study Programmes;
- 350 doctoral students;
- More than 2500 international students.

The university library has over 600,000 volumes distributed through five fully library units placed in the whole campus. The library has been computerized so one can find information from a variety of sources including books, newspapers, and journal articles. The library is open throughout the week.

DJUG has concluded more than 300 inter-institutional agreements with universities from over 50 EU and non-EU countries.

All types of activities are carried out in optimal conditions in:

- 14 faculties
- 34 research centers;
- 3 student campuses (accommodation for 2800 students);
- 4 cafeterias;
- 12 reading rooms;
- 1 student chapel;
- 2 gyms;
- 1 medical office.



FACULTIES

- Faculty of Engineering
- Faculty of Naval Architecture
- Faculty of Food Sciences and Engineering
- Faculty of Automation, Computer Sciences, Electronics and Electrical Engineering
- Faculty of Physical Education and Sport
- Faculty of Letters
- Faculty of Sciences and Environment
- Faculty of History, Philosophy and Theology
- Faculty of Engineering and Agronomy in Braila
- Faculty of Economics and Business Administration
- Faculty of Law and Administrative Sciences
- Faculty of Medicine and Pharmacy
- Faculty of Arts
- Cross-Border Faculty (with subsidiaries in the Republic of Moldova, Ukraine and Italy)



THE SARS-COV-2 PANDEMIC

For our institution too, the SARS-CoV-2 pandemic involved difficulty in making long-term decisions and was also an impulse to adapt quickly in order to offer students best quality online teaching on the Micro Soft Teams platform.

COVID-19 travel restrictions have been lifted in Romania. Providing proof of vaccination, recovery from COVID-19 or negative test results is no longer necessary, and travelers are not subject to quarantine anymore

Nevertheless, you are advised to:

- **keep informed** regularly on the situation in Romania by **checking EC (European Commission) sources** (<https://reopen.europa.eu/en/map/ROU>);
- **bring a laptop** with you so as to be prepared to attend online activities, if needed.

For more details, check <http://www.en.ugal.ro/info-covid-19>.

FEW WORDS ABOUT ROMANIA AND GALATI

A. History

The name "Romania" comes from the Latin word "Romanus" which means "citizen of the Roman Empire." *Authentic*, *Natural* and *Cultural* are the words that best capture the essence of Romania, a dynamic country rich in history, arts and scenic beauty.

Romania offers countless unique travel experiences that are waiting to be discovered. A journey of three or four hours, by car or train, can take you from the Danube River to a beautiful, intact, medieval town; from Bucharest - Romania's capital city - to the Black Sea; from Southern Transylvania to the historic regions of Bucovina or Maramures.

Galati town itself developed from an ancient Dacian settlement of the sixth and fifth centuries BCE where there was a ford across the Danube river. In 101 to 102 and 105 to 106, the Dacians fought wars against the Romans and the area became part of the Roman empire. A strong Roman fortress was built at Barbosi to defend the ford across Danube. From the 300s a Daco-Roman settlement developed at a ford south of the site of the Church of the Virgin.

For more information about Galati, you can use **Galati City app** available for IOS and Android.

Visiting Romania and Galati while you study will give you the opportunity to comprehend Romania's cultural and historical richness.

In Galati, we have many museums, including archaeological and contemporary, all students can enter the museums with reasonable prices with your student ID for the discount.

For more information about the museums, check:

[https://www.tripadvisor.com/Attractions-g304059-Activities-Galati Galati County Southeast Romania.html](https://www.tripadvisor.com/Attractions-g304059-Activities-Galati-Galati-County-Southeast-Romania.html)

Throughout Romania, there are many film and music festivals. For more information, check: <https://rolandia.eu/festivals-romania-2018/>.

B. Public holidays

St. Andrew's Day: 30 November

Romanian National Day: 1st of December, 2nd of December

Christmas: 25-26 December

New Year's Days: 1st and 2nd of January

Union Day: 24 January

Good Friday: 14 April

Easter: 16-17 April

Labour Day: 1st of May

Children's Day: 1st of June

Pentecost: 4-5 June

Assumption of Mary: 15 August



C. Weather

Romania has a temperate climate, similar to the northeastern United States, with four distinct seasons:

- *Spring* is pleasant with cool mornings and nights and mostly warm days;

- *Summer* is quite warm, with extended sunny days. The hottest areas in summer are the lowlands in southern and eastern Romania where 37°C is often reached in July and August. Temperatures are always cooler in the mountains;
- *Autumn* is dry and cool, with fields and trees producing colorful foliage;
- ***Winters can be cold, especially in the mountains. While not the rule, abundant snowfalls may occur throughout the country, from December to mid-March. There are significant regional differences of the climate between different regions of Romania.***

For more information on the weather, check:

<https://www.accuweather.com/en/ro/romania-weather>.

BEFORE THE MOBILITY

The home university **nominates** the students who will carry out an Erasmus+ mobility for studies/placement at “Dunarea de Jos” University of Galati.

Deadlines for student nomination:

Autumn semester: **15 May**

Spring semester: **15 November**

Then, our Erasmus Office contacts you and provides information about the application procedure.

A. Application

List of requested documents for the APPLICATION FILE

(<https://www.en.ugal.ro/studies/erasmus-programme/application-file>):

- Application form
- Learning Agreement
- Transcript of Records in English
- Proof of identity document (copy of identity card/passport)
- Health insurance for the entire period of student’s stay (for European students)
- Health certificate issued by your personal doctor (translated in English)

1. Application form

- Fill in the Application form using a computer and avoid to format the document.
- Include 30 ECTS credits/semester or 60 ECTS credits/year.
- Send it in **WORD** format to the Erasmus Office for verification.
- After verification by the Erasmus Office, attach a passport size photo of yours in the specified place.
- Have it signed both your institutional and departmental coordinator.
- Send the scanned document to erasmus@ugal.ro.

2. Learning Agreement (LA)

- Fill in the LA with information in the Course Catalogue (<https://en.ugal.ro/studies/erasmus-programme/course-catalogue>).
- The **language of instruction** in most of the departments is mainly **Romanian**. However, these Departments offer assistance (tutorials) in English.
- Send it in **WORD** format to erasmus@ugal.ro for verification by the academic coordinator at DJUG.
- After verification by the Erasmus Office, print the LA and have it signed by the academic coordinator at your university.
- Send the scanned LA to erasmus@ugal.ro, along with the other documents mentioned in the application file .

Deadlines for sending the documents:

Autumn semester: **15 June**
Spring semester: **1st December**

After successfully fulfilling the application procedure according to the deadlines above, **the receiving institution** will send you its **decision within 4 weeks**. You will receive a **copy of the Learning Agreement** signed by the legal representative of DJUG along with a **letter of invitation** for a study/placement mobility (if requested by your university).

B. Romanian language course

Most bilateral agreements between our institutions (with the exception of the study domain Languages) mention that the **language of instruction 1** is **Romanian** (didactic activities) and the **language of instruction 2** is **English (only for tutoring)**.

Consequently, our university organizes before the beginning of each semester a **two-week course** **in Romanian language** for incoming students. The course is **free of charge** and students are strongly recommended to attend it.



The two-week period of the course will be included in the **Attendance Certificate** that we shall issue at the end of your mobility.

Confirm participation by the mid of August (1st semester) and by the mid of January (2nd semester) so that we organize it properly according to the safety measures in force.

C. Academic calendar & Grading scale

The academic year consists of two 14-week semesters. The Autumn Semester lasts from October to mid-February and the Spring Semester, from mid-February to the end of June.

For the calendar for each academic year, check:

https://en.ugal.ro/files/cristian.obreja/2022/4/1_Academic_calendar_2022-2023.pdf

Absolute or Relative Grading System can be used for assessment of the students. The system to be used is announced before the beginning of the academic year after the decision and approval by the University Senate. All assessment procedures are based on ECTS Credits.

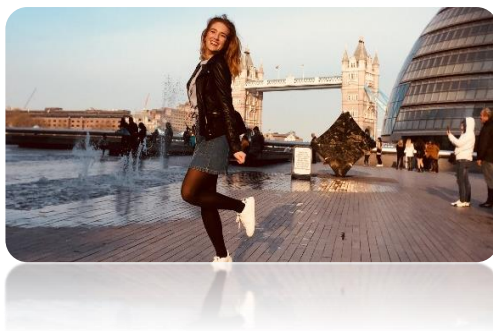
GRADING SCALE

Mark	Degree	Grade
1-4	Fail	FX
5	Sufficient	F/E
6	Satisfactory	D
7-8	Good	C
9	Very Good	B
10	Excellent	A

D. Host country formalities

Visa (non-UE) students

1. NON-UE students wishing to study in Romania need to have a **valid passport**;
2. Before travelling, it's necessary a student visa obtained from a Romanian Embassy/Consulate.



Contact the nearest Romanian Embassy or Consulate in your country for the most up-to-date and detailed information.

For further information, please check: <http://evisa.mae.ro/home>.

ATTENTION TO: Visas cannot be obtained within Romania.



Erasmus Office will send to you the **Letter of Acceptance**, which is necessary for the visa application procedure.

Health Insurance

We strongly recommend you to get a **health insurance** available for the entire period of stay in Romania.

a) If you unexpectedly fall ill during your stay, you are entitled to an **emergency medical treatment**, based on your **European Health Insurance Card**.

b) The students from non-UE countries should purchase **private health insurance** in their home countries before departure.



In both cases, students are strongly recommended to have a **private health insurance** with **international coverage that also covers the costs associated with Covid-19** so that you benefit from medical investigations and treatment covered, if the case be.

ESN Candidate Section

For now, UDJG does not have an ESN GALATI section. There is a small group of volunteers who help Erasmus+ incoming students with the first steps of living and studying in Galati.



E. Transportation

If you **land** on Henri Coanda **Airport**, (OTP) in Bucharest, please choose the correct exit gate for your luggage pick up.

We **recommend** exchanging just a **small amount of money**.

From Bucharest to Galati, there are two ways:

- by **train**, the average cost of a 2nd class train ticket is 65-75 lei (14-17 €). Check <https://www.cfrcalatori.ro/en/>.
- by **bus** directly from the airport, check: <https://www.transfero.ro/en/galati-otopeni-2>; <https://transportsitransfer.ro/#>.

The cost of the bus ticket is depending on the company and the average is 70-100 lei (15-20 €).

Local transportation in Galati

1. **public transport** (tram and city busses), After you have been issued a student ID card by DJUG, you may apply for a **student travel pass** (you will have student discount) to be used on.
2. **taxi** (local companies: As, Samataxi, Smart, Albertini, etc.) and prices are between 2.4 and 2.7 lei/km (60-80 € cents/km).

For more information about the timetable, maps you can use **Moovit** application available for IOS and Android.

DURING THE MOBILITY

All the meetings at the Erasmus Office are scheduled. According to your arrival date, we will invite you to our office. The **address** is: 47, Domneasca Str., ground floor.

Steps to be taken:

- Student has to translate into Romanian the Transcript of Records (ToR).
- Erasmus Office sends Certificate of Arrival to student's home university.
- DJUG academic coordinator prepares timetable of didactic activities.
- Together with DJUG academic coordinator, student makes changes **to the Learning Agreement** (no later than 2-3 weeks since your arrival) in case of timetable conflict or subjects that need to be replaced.
- Student contacts DJUG academic coordinator about all academic matters.
- Student checks regularly email address for important notifications/messages.

Enrolment procedure

After enrollment, you will be issued a **student ID card** which enables you to benefit from all **DJUG** student privileges (free train card to travel all over Romania and discounts for local transportation).

Our university has negotiated some **discounts** with local partners for students and staff, which you might find attractive (check: <https://en.ugal.ro/informatii/partners>).



Attendance

All didactical activities (courses, labs, practical activities etc.) are **compulsory for all students, Erasmus+ incoming students included**. Once enrolled, the Erasmus+ incoming students have the same rights and obligations as any other student.



Welcome day

A Welcome Day for incoming exchange students is arranged twice a year, at the beginning of each semester. It's an opportunity to learn about the people and resources that can help you make your stay at DJUG both relevant for your future career, and enjoyable, and it introduces you to our campus but not only.

Residence Permit

1. If the mobility period is less than 90 days, you do not need a Residence Permit.
2. If the mobility period is longer than 90 days, you need to apply for the residence permit.

Documents required:

- application;
- border crossing document (passport) original and duplicate;
- certificate from DJUG;
- proof of legal ownership (the contract of accommodation), original and duplicate;
- letter of acceptance for the studies (copy and the translation) issued by the Erasmus Office;



- medical certificate issued by the doctor of DJUG that certifies that you do not suffer from diseases that may pose a threat to the public health. Students enrolled at **DJUG** are usually given residence permits that are valid for the exchange period as indicated in the invitation letter.

You may extend your residence permit if you are extending the enrolment at **DJUG**. Extension requires the same procedures as applying for a new residence permit with one exception, a tax of ~259 Ron (~50 Euro).

For more information, please check here: <http://igi.mai.gov.ro/en/content/studies>.



Lost passport and/or residence permit

1. If you **lose your passport** while in Romania you must report it to your country's Embassy/Consulate in Romania (they are mainly situated in Bucharest). They will issue you an emergency passport.
2. If you **lose your residence permit**, you must first report this to the closest police station at the place of the incident. Please do not forget to get a copy of the report that the police holds about this incident. The office will provide you another document for the application of a new residence permit.
3. Inform the Erasmus Office at **DJUG**.

Certificate of registration

As EU students, it's necessary to apply for the **certificate of registration**.

Documents required:

- application;
- border crossing document (travel document) original and duplicate;
- academic certificate from DJUG;
- health insurance covering all risks in the host member state (European Health Card);
- proof of legal ownership (the contract of accommodation), original and duplicate.

We strongly recommended students to apply either for the residence permit or the certificate of registration **within one month after entering Romania**. The Erasmus Office will assist you in preparing all the documents.

If you **change the address** that you initially gave to the Erasmus Office, you **must inform** the Immigration Office and the Erasmus Office about this change within 2 days (48 hours).

AT THE END OF THE MOBILITY



Examinations In addition to midterm examinations and other work, students are required to take a final examination. Final examinations (room, date, hour) are decided and announced by the faculty.

Students may be approved a make-up examination (re-sit session) if they provide valid reasons. If, for some reason, you cannot sit in for your exam, please inform your academic coordinator.

Steps to take

- **Notify** Erasmus Office about your departure, at least 1 week before leaving Galati/Romania, in order to get the Certificate of Attendance.
- **Make sure** you paid accommodation for the whole period keep all receipts.

Remember:

- **TOR** is issued both in English and Romanian, no later than 4 weeks after the exam session ends.
- The DJUG Erasmus Office sends a scanned copy by email to you and your home university and also posts the original document to your university.

ACCOMMODATION

Student dormitory

The university offers accommodation to incoming exchange students in Dorm A, a new and fully renovated dormitory, which can accommodate 50 students in 20 rooms.

Allocations are on a first come, first served basis.

The student dorm has a 24/7 reception desk. The dormitory is comfortable and suitable for accommodation and study purposes, with all necessary facilities including LED TV, common kitchen on every floor (equipped with fridge, electric stove, microwave, electric mugs), self-service laundry room, study rooms and Wi-Fi internet access. For security reasons, there is CCTV (video surveillance) on every level/floor.

On campus, next to the cafeteria, there are also industrial washing machines, the access is free of charge and based on an online appointment (check <https://campus.ugal.ro/spalatorie/>).

The price per person (all utilities included) are:

- 195 **Euro /month** for a **single room** (**only if available**)
- 130 **Euro/month** for a **double/triple** room.



Types of rooms/modules:



1. Rooms 301 and 320 (12 sqm each): 2 bathrooms, 4 students, no kitchen.

2. Modules 303 A-B and 318 A-B: Each module has one 12 sqm room for 2 students and a 20 sqm room for 3 students, common bathroom, no kitchen.

3. Modules 304-305, 306-307, 314-315 and 316-317: Each module has two 20 sqm rooms, each for 3 students, common bathroom, small kitchen.

4. Modules 308-309, 310-311 and 312-312: Each module has two 15 sqm rooms, each for 2 students, common bathroom, small kitchen.

Private accommodation

You may rent a flat for approximately 200-250 Euro/month, facilities excluded.

The easiest way to find a flat is to do some research on the internet or knock the door of a real estate agency in the university neighborhood.

Take into consideration paying a **deposit** (equal to approx. one-month rent), whether you are renting the flat directly or through an agency, which will be reimbursed at the end of the tenancy contract if you hand in the flat in good condition.

Cafeterias/Canteens

On all campuses there are cafeterias where students and staff are served lunch at a very reasonable price (10 Ron \approx 2 €). Moreover, you can access the link of the official website to check the daily updated menu- <http://campus.ugal.ro/meniu/>

The mini cafeterias open hours for lunch:

Monday to Thursday: 12:00-16:00

Friday: 12:00-14:00

Addresses:

1. Cafeteria Notre Dame - on 111 Domneasca St., 800201, in Campusul „Științei”.
2. Minicantina ASE - on 59-61 Garii St.
3. Minicantina Universitate - on 47 Domneasca St.

Student Canteen open hours on weekdays: 13:00-19:30

Address: 155 Domneasca Str., „Alexandru Ioan Cuza” University Campus.

SPORT FACILITIES AND LEISURE ACTIVITIES

The social and cultural activities organized in our city are diverse and DJUG also provides students with many alternative opportunities for leisure.

Throughout the academic year, the university hosts many famous guests from different academic and artistic backgrounds, enabling students to participate in a variety of lectures, seminars and workshops, in addition to enjoying performances and special exhibitions in music, dance, theatre and visual arts.

There are various events traditionally organized in the university (junior prom - in autumn).



Students have the use of a modern Sports Centre with both indoor and outdoor activities. The Centre's main building is spacious and fully equipped for basketball, volleyball, handball and practicing gymnastics.

The outside courts are arranged for football, basketball and tennis playing.

There are also additional sport spaces such as a smaller gymnastics building near one of the dorms and two separate, small gyms inside two teaching buildings. The access is free of charge, based on an appointment.

Students also have the use of "Portul Rosu" stadium for activities such as long distance running or sprints.

There are also two fully equipped students gyms – one for male and one for female students. Each gym is located inside a dorm and each of them can accept 10 people at one time.

Student Cultural Centre

With a history of over 50 years, the Student Cultural Centre has a wide range of educational, artistic, cultural projects and activities, including sports events.

The Centre’s facilities include:

- a theatre room – for the rehearsals of the theatre clubs;
- a music room – for the rehearsals and the recordings of the music bands;
- a mirror room – for the rehearsals of the dance, theatre, fashion, aerobics and aikido clubs;
- the main Stage Hall – with a total capacity of 350 seats, it hosts main events such as the Freshmen’s Ball, conferences, big performances, plays;
- the Studio room – it can seat 90 people and it hosts smaller conferences or events;
- an additional Conference room – with 20 seats;
- a photo studio.



Some of the activities are:

- The “Baladele Dunării” National Student Folk Music Festival;
- The “S’live rock” National Student Rock Music Festival;
- The National Breakdance Festival;
- The “ActFest” National Student Theatre Festival;
- The “Extravagance” National Student Fashion Festival;
- The “Operațiunea Monstrul” National Student Competitive Fishing Contest.



The Cultural Centre also hosts poetry clubs, debate clubs, tourism clubs, etc.

PRACTICAL INFORMATION

Money

- The currency in Romania is LEU (RON).
- Most ATMs accept international credit cards or bank cards (a strip of logos is usually displayed above the ATM).
- Almost all ATMs have a **language key** to enable you to read the instructions in English.
- Most commercial establishments accept **international credit cards**, such as Visa, Master Card and American Express.
- The value-added tax, here called TVA, is 19%. Value-added tax is nearly always included in quoted prices.

Postal Service

1. Post offices are open from 8:00 to 18:00 Monday to Friday and 9:00 to 13:00 Saturday.
2. All post offices branches have the facilities to exchange money at the current international exchange rates.
3. There is also an express postal service, 24 h from Monday to Saturday, for letters, documents and small packages.

Mobile Phones, Telephone & Internet

Major GSM operators in Romania are Orange, Vodafone and Telekom.

You can use your mobile phone in Romania if your provider has enabled international **roaming**. However, for exchange students we recommend that you buy a **local prepaid SIM card** here. Romania has very wide coverage networks so you shouldn't have any problems with your calls.

Emergency Number

Dialing **112** is a fast way to communicate with the emergency dispatcher centers (Police, Fire Brigade, Ambulance) in case of emergency.

MISCELLANEOUS FACTS



OPENING HOURS OF....

Government Offices	08.00-16.30	Monday-Thursday
	08.00-14.00	Friday
	Closed Saturday and Sunday	

Banks	09.00-17.00	Monday to Friday
	Closed Saturday and Sunday	

Shops	09.00-20.00	Monday to Friday
	09.00-15.00	Saturday and Sunday

Cost of living

The estimated cost of living is 350-450 Euro/month. This includes meals, accommodation and local transport.



Milk (regular, 1 liter)
Average: 7 Ron (1.5 €)



Water (2 liter bottle)
Average: 3 Ron (70 € cents)



Chicken Breasts (boneless) (500 gr)
Average: 15 Ron (3 €)



Eggs (10, large)
Average: 10 Ron (2 €)



Tomatoes (1 kg)
Average: 7 Ron (1.5 €)



Local Cheese (500 gr)
Average: 10 Ron (2 €)



Potatoes (1 kg)
Average: 5 Ron (1 €)



Domestic beer in the supermarket (0.5 l)
Average: 5 Ron (1 €)



Loaf of Fresh White Bread
Average: 2 Ron (40 € cents)



One-way Ticket (local transport)
Average: 2 Ron (50 € cents)



Cinema, 1 seat
Average: 22 Ron (5 €)



Restaurant Meal (1 drink included)
Average: 40 Ron (8 €)

Shopping

In Galati, the main shopping areas for food, clothes, toys, presents, electric-electronic items etc. is Shopping City Centre Galati. Other various sized shopping malls where you can find almost everything are: Winmarkt Galati and Dunarea Mall.

For more information about the shopping areas please visit;
<https://www.winmarkt.ro/en/>.

Food

The Romanian cuisine is a diverse blend of different dishes from several traditions with which it has come into contact, but it also maintains its own character.

There are quite a few different types of dishes, such as: ciorba, which includes a wide range of soups with a characteristic sour taste. (may be meat, vegetable soups, tripe and calf foot soups, or fish soups, all of which are soured by lemon juice, sauerkraut juice, vinegar, or bors - traditionally made from bran). **Tuica** (plum brandy) is a name for a strong alcoholic drink in Romania.



For more information about traditional Romanian cuisine please visit: https://ro.wikipedia.org/wiki/Bucătăria_româneasca.

Vocabulary and some expressions

Hello!	Bună!	Man	Bărbat
Good morning!	Bună dimineața!	Woman	Femeie
Good evening!	Bună seara!	Boy	Băiat
Good night!	Noapte bună!	Girl	Fată
Goodbye	La revedere/Pa	Hospital	Spital
Yes	Da	University	Universitate
No	Nu	Book	Carte
Please	Te rog	Library	Biblioteca
Thanks	Mulțumesc	Right	Dreapta
Excuse me	Scuză-mă	Left	Stânga
Breakfast	Mic dejun	Entrance	Intrare
Lunch	Prânz	Exit	Ieșire
Dinner	Cină	City	Oraș
Food	Mâncare	I love you!	Te iubesc!
Drink	Băutură	My name is...	Mă cheamă...
Beer	Bere	Cheers!	Noroc!
Tea	Ceai	One beer, please!	O bere, te rog!
Coffee	Cafea	Help!	Ajutor!
Fruit Juice	Suc de fructe	You're welcome!	Cu plăcere!
Water	Apă	How much is this?	Cât costă?
Ticket	Bilet	Bill please!	Nota, vă rog!
Bus	Autobuz	Very/lot/many	Mult
Street	Stradă	How are you?	Ce mai faci?
Road	Drum	I don't understand	Nu înțeleg
Airport	Aeroport	Next stop	Următoarea oprire
Plane	Avion	Drop me here!	Lasă-mă aici!
Train	Tren	Any discount?	Are reducere?
Money	Bani	Any exchange office?	O casă de schimb?

CONTACT INFORMATION

Name of institution: ***Dunarea de Jos University of Galati***

Erasmus ID code: **RO GALATIO1**

Erasmus Office team

Assoc. prof. Steluta STAN
Erasmus+ institutional Coordinator

Adriana PETRESCU
Erasmus+ student mobility coordinator

Tatiana COJAN
Erasmus+ student mobility coordinator

CONTACT DETAILS

Address: 47 Domneasca Str., 80008, Galati

Tel: +4 0756 063 672

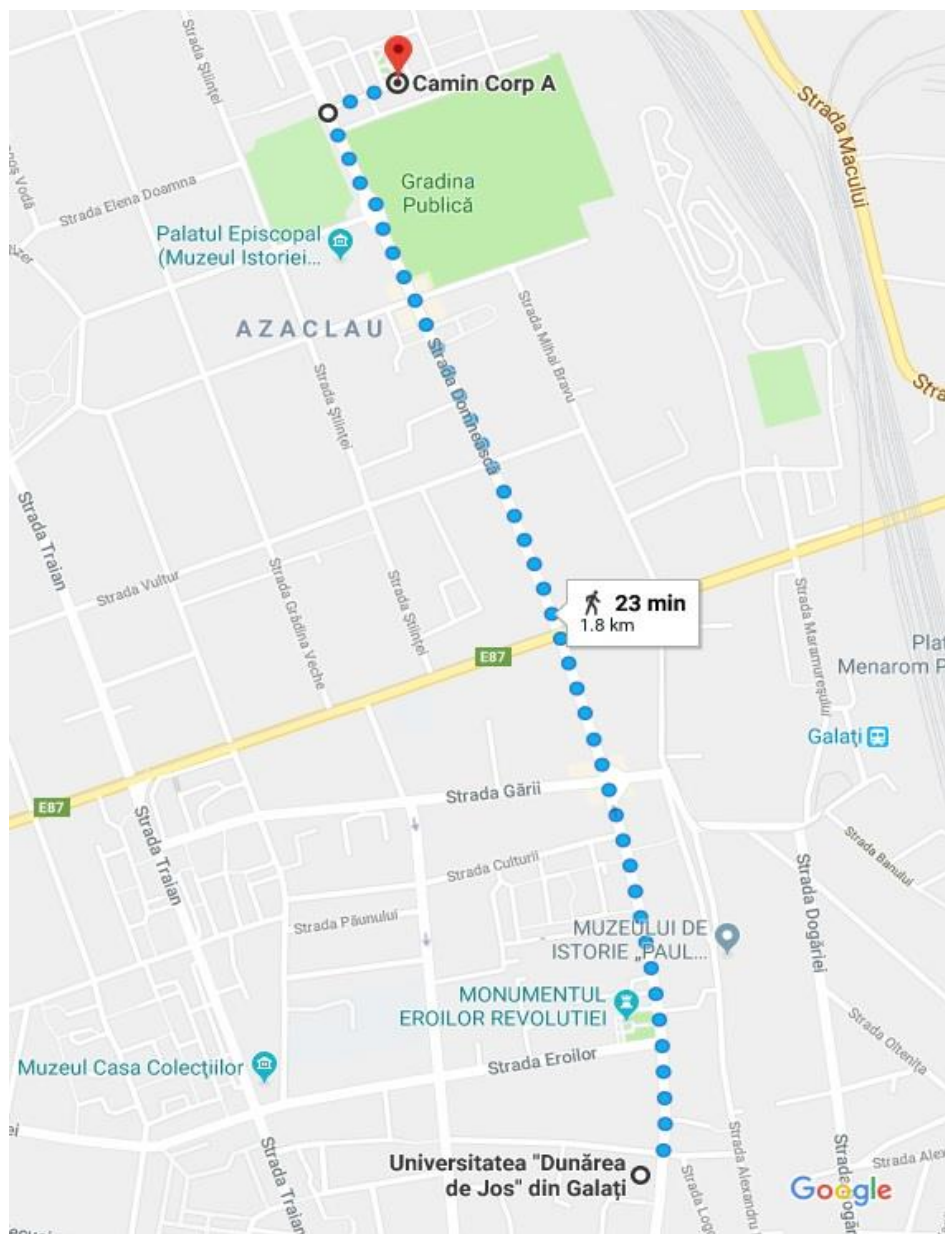
E-mail: erasmus@ugal.ro

Facebook: [@erasmusudjg](#)

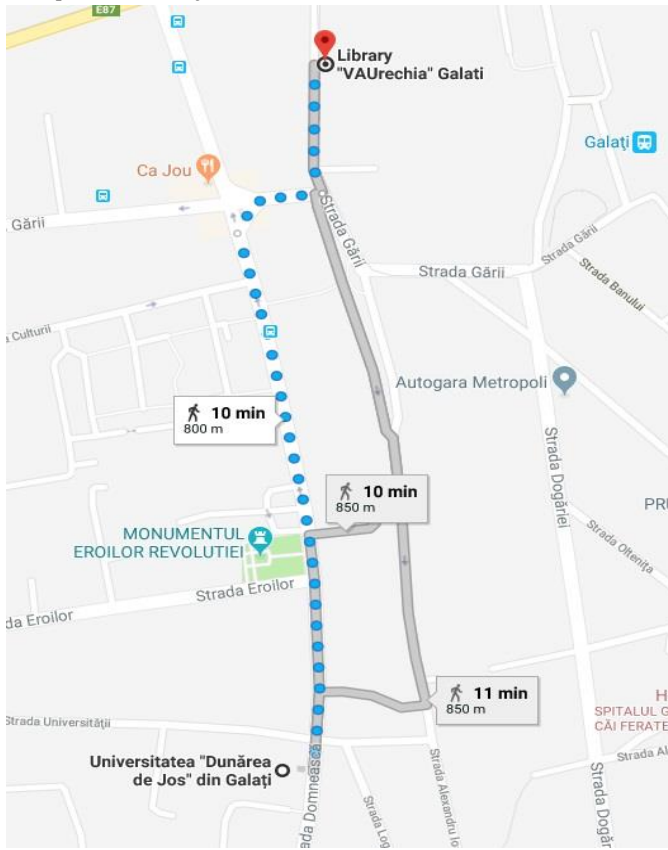
Instagram: [@erasmus_udjg](#)

MAPS

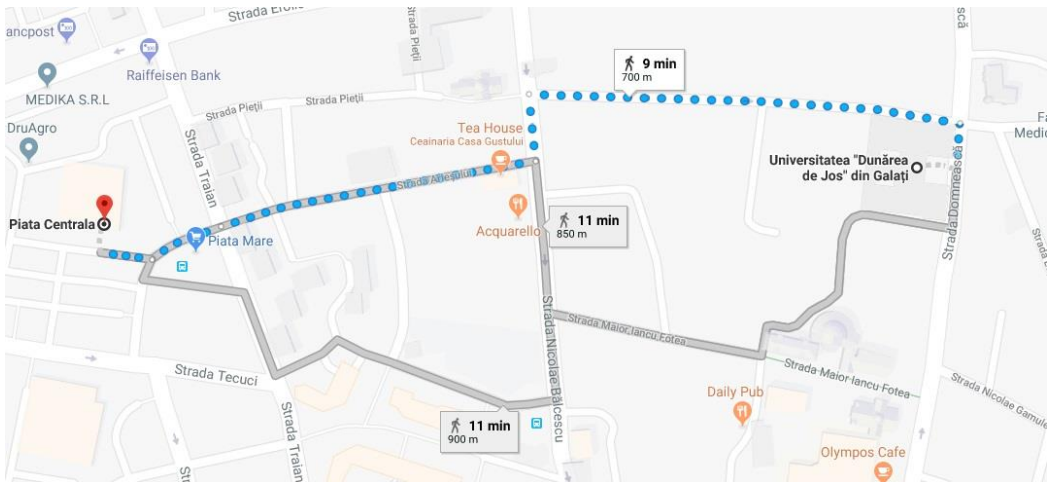
- The student dorm (A) is located at 4 Parcului Str., building A.
- The Erasmus Office is located at 47 Domneasca Str.



c. The public library is located at 16 Mihai Bravu Str.



d. The Central Market is located at 63 Traian Str.



e. Winmarkt Shopping Centre (centre of the city)

